



AT OSHARA  
VILLAGE

ONE STORY ■ 2 BEDROOM

Option: 1 bedroom + office



*Renderings are for visual aid only. Interior Unit Representation.  
Garage placement may vary.*

---

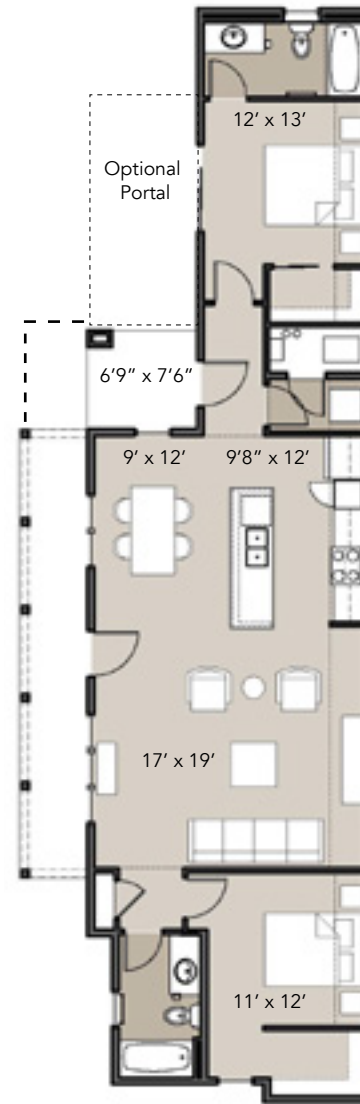
The homes at Oshara Village are built to the highest standards, embracing quality, value and energy and water consciousness. At Homewise Homes®, we believe everyone deserves to live well.

## ONE STORY ■ 2 BEDROOM

Option: 1 bedroom + office

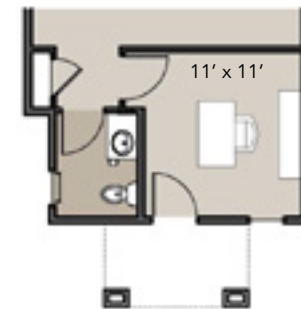
- 2 bedrooms, 2 baths
- Heated: 1,201 SF
- Optional portal: 114 SF
- Covered portal: 191 SF interior unit  
240 SF end unit

Starting from \$228,500



PLAN A

Optional office with separate entry



Homewise, Inc. 1301 Siler Rd, Bldg D, Santa Fe, NM 87507 505.983.WISE (9473) www.homewise.org/oshara



Income or other restrictions may apply. Renderings shown are artist concepts. Continuing a policy of constant research, design and improvement, Homewise Inc. reserves the right of price, plan and specification change without notice or prior obligation.

HW4130 4/16

