



homewise®
HOMES

AT OSHARA
VILLAGE

TWO STORY ■ 3 BEDROOM

Option: 2 bedrooms + office



*Renderings are for visual aid only. Interior Unit Representation.
Garage placement may vary.*

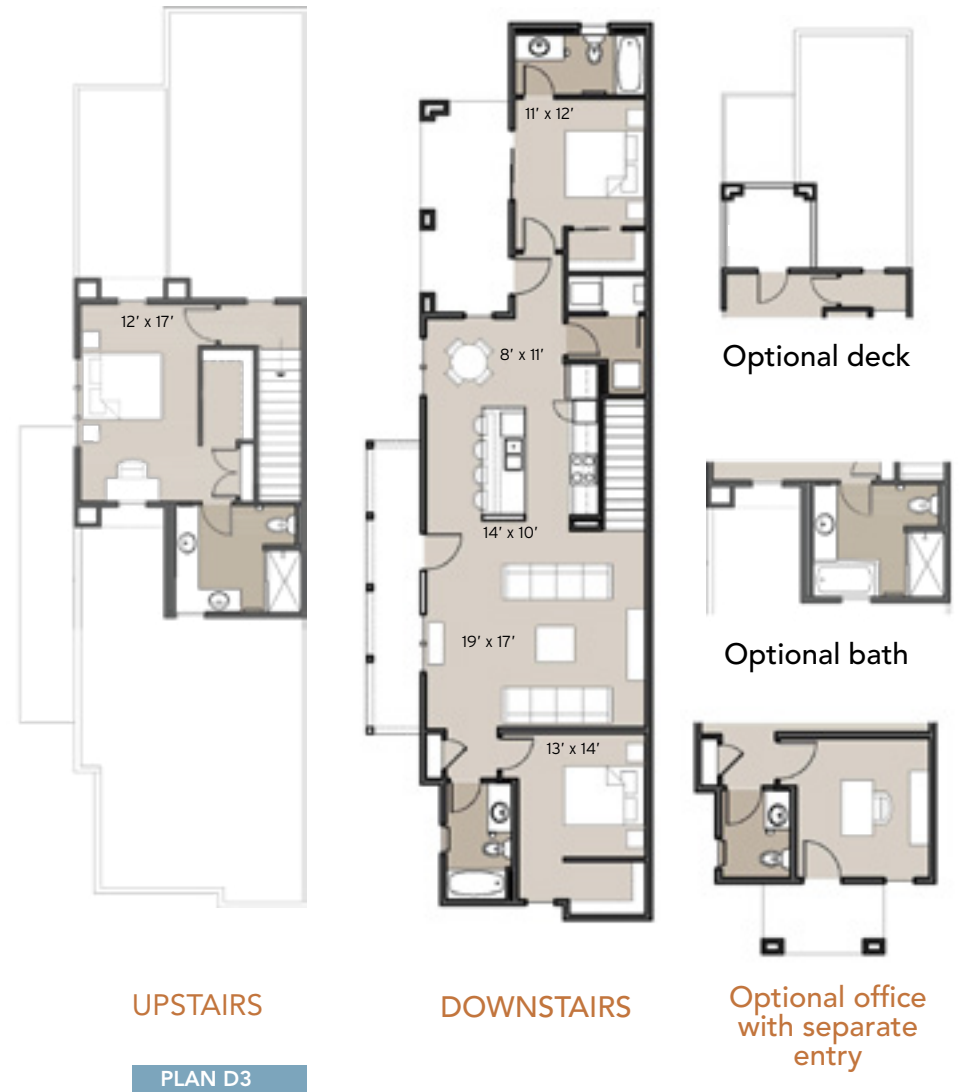
The homes at Oshara Village are built to the highest standards, embracing quality, value and energy and water consciousness. At Homewise Homes®, we believe everyone deserves to live well.

TWO STORY ■ 3 BEDROOM

Option: 2 bedrooms + office

- 3 bedrooms, 2 baths
- Heated: 1,661 SF
- Covered portal: 246 SF
- Optional covered deck: 83 SF

Starting from \$263,000



Homewise, Inc. 1301 Siler Rd, Bldg D, Santa Fe, NM 87507 505.983.WISE (9473) www.homewise.org/oshara



Income or other restrictions may apply. Renderings shown are artist concepts. Continuing a policy of constant research, design and improvement, Homewise Inc. reserves the right of price, plan and specification change without notice or prior obligation.

HW4132 4/16

